

**CASINO REVENUES (MLN)
NASSAU/PARADISE ISLAND
1999**

Nassau/P.I.	1999	1998	% Change
Drop	\$ 828.30	\$ 609.80	35.8%
Win	\$ 172.53	\$ 130.50	32.2%
Win/Drop Percentage	20.8%	21.4%	-0.6%

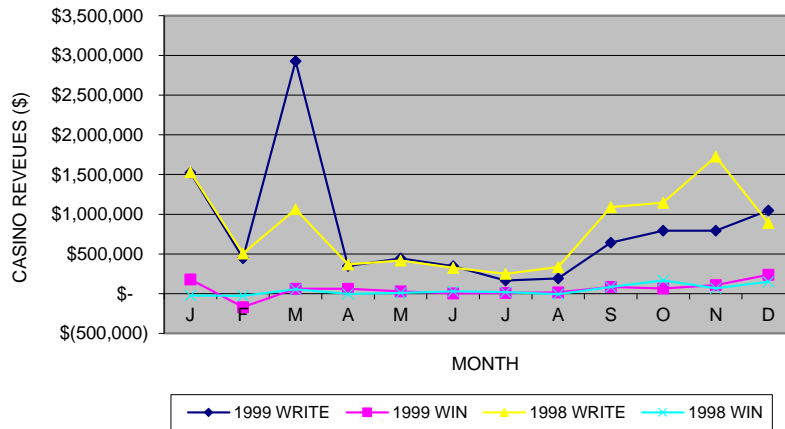
**CASINO REVENUES (MLN)
GRAND BAHAMA ISLAND
1999**

Grand Bahama	1999	1998	% Change
Drop	\$ 128.88	\$ 138.40	-6.9%
Win	\$ 35.79	\$ 40.60	-11.8%
Win/Drop Percentage	27.8%	29.4%	-1.6%

**CASINO REVENUES (MLN)
SPORTING ACTIVITIES
NASSAU/PARADISE ISLAND
1999**

NASSAU/P.I.	1999	1998	% Change
Write	\$ 9.67	\$ 9.65	0.2%
Win	\$ 0.69	\$ 0.52	31.3%
Win/Write Percentage	7.1%	5.4%	1.7%

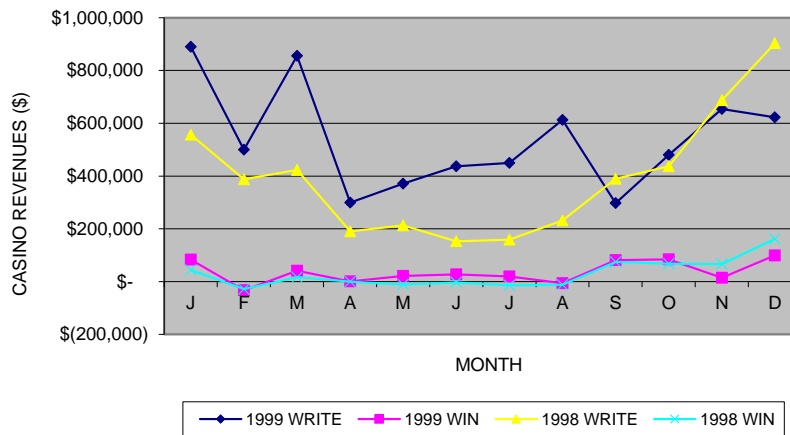
**CASINO REVENUES (MLN)
SPORTING ACTIVITIES
NASSAU/PARADISE ISLAND**



**CASINO REVENUES (MLN)
SPORTING ACTIVITIES
GRAND BAHAMA ISLAND
1999**

Grand Bahama	1999	1998	% Change
Write	\$ 6.47	\$ 4.73	36.8%
Win	\$ 0.43	\$ 0.36	19.6%
Win/Write Percentage	6.7%	7.7%	-1.0%

**CASINO REVENUES (MLN)
SPORTING ACTIVITIES
GRAND BAHAMA ISLAND
1999**



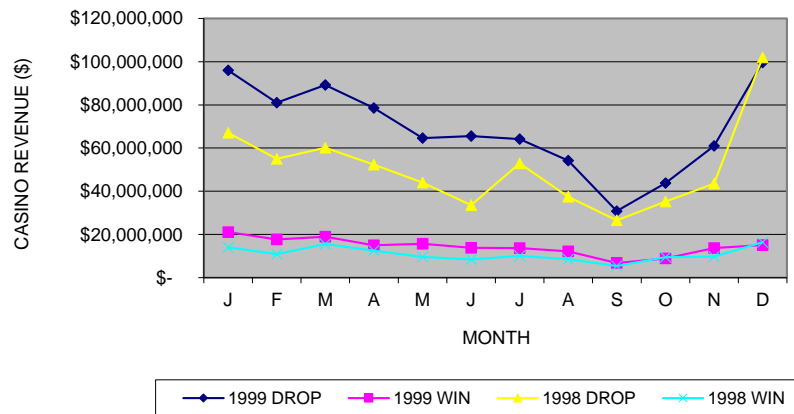
CASINO REVENUES:NASSAU/P.I.:1999

	1999			1998			DROP	WIN
	DROP	WIN	% WIN	DROP	WIN	% WIN	% Chg. 99/98	% Chg. 99/98
January	\$ 95,938,207	\$ 21,120,611	22.0%	\$ 67,029,292	\$ 14,035,573	20.9%	43.1%	50.5%
February	\$ 80,986,018	\$ 17,699,383	21.9%	\$ 55,057,165	\$ 10,877,033	19.8%	47.1%	62.7%
March	\$ 89,142,999	\$ 18,940,026	21.2%	\$ 60,213,643	\$ 15,570,720	25.9%	48.0%	21.6%
April	\$ 78,515,351	\$ 14,972,804	19.1%	\$ 52,312,754	\$ 12,499,880	23.9%	50.1%	19.8%
May	\$ 64,637,704	\$ 15,657,767	24.2%	\$ 44,036,631	\$ 9,590,598	21.8%	46.8%	63.3%
June	\$ 65,538,545	\$ 13,831,996	21.1%	\$ 33,541,289	\$ 8,391,941	25.0%	95.4%	64.8%
July	\$ 64,140,001	\$ 13,642,528	21.3%	\$ 52,905,102	\$ 10,023,129	18.9%	21.2%	36.1%
August	\$ 54,161,225	\$ 12,173,105	22.5%	\$ 37,438,597	\$ 8,559,707	22.9%	44.7%	42.2%
September	\$ 30,834,240	\$ 6,782,781	22.0%	\$ 26,525,520	\$ 5,397,066	20.3%	16.2%	25.7%
October	\$ 43,787,254	\$ 8,892,312	20.3%	\$ 35,264,570	\$ 9,455,582	26.8%	24.2%	-6.0%
November	\$ 60,956,919	\$ 13,674,317	22.4%	\$ 43,507,150	\$ 9,670,170	22.2%	40.1%	41.4%
December	\$ 99,660,616	\$ 15,138,944	15.2%	\$ 101,992,863	\$ 16,413,567	16.1%	-2.3%	-7.8%
TOTAL	\$ 828,299,079	\$ 172,526,574	20.8%	\$ 609,824,576	\$ 130,484,965	21.4%	35.8%	32.2%

***Casino Drop** is the amount of money that the casino collected from the drop boxes located at each of the gaming tables. **Casino Win** is the amount of money that the Casino has left after expenses (e.g., expenses includes winnings of the patrons) of the table. **Casino Write** is the money that patrons put up to bet on sporting activities. The win when associated with the **Casino Write** refers to the amount of money retained by the casino after the sports games as well as the betting have concluded. A (\$1000.00) for example, means that the casino loss money.

	1999		1998	
	DROP	WIN	DROP	WIN
J	\$ 95,938,207	\$ 21,120,611	\$ 67,029,292	\$ 14,035,573
F	\$ 80,986,018	\$ 17,699,383	\$ 55,057,165	\$ 10,877,033
M	\$ 89,142,999	\$ 18,940,026	\$ 60,213,643	\$ 15,570,720
A	\$ 78,515,351	\$ 14,972,804	\$ 52,312,754	\$ 12,499,880
M	\$ 64,637,704	\$ 15,657,767	\$ 44,036,631	\$ 9,590,598
J	\$ 65,538,545	\$ 13,831,996	\$ 33,541,289	\$ 8,391,941
J	\$ 64,140,001	\$ 13,642,528	\$ 52,905,102	\$ 10,023,129
A	\$ 54,161,225	\$ 12,173,105	\$ 37,438,597	\$ 8,559,707
S	\$ 30,834,240	\$ 6,782,781	\$ 26,525,520	\$ 5,397,066
O	\$ 43,787,254	\$ 8,892,312	\$ 35,264,570	\$ 9,455,582
N	\$ 60,956,919	\$ 13,674,317	\$ 43,507,150	\$ 9,670,170
D	\$ 99,660,616	\$ 15,138,944	\$ 101,992,863	\$ 16,413,567
TOTA	\$ 828,299,079.32	\$ 172,526,574.42	\$ 609,824,576	\$ 130,484,965

CASINO REVENUE: NASSAU/P.I.:1999



CASINO REVENUES:GRAND BAHAMA:1999

	1999			1998			DROP	WIN
	DROP	WIN	%WIN	DROP	WIN	%WIN	%Chg. 99/98	%Chg. 99/98
January	\$ 16,402,606	\$ 4,720,750	28.8%	\$ 15,851,559	\$ 4,860,597	30.7%	3.5%	-2.9%
February	\$ 14,488,309	\$ 3,876,366	26.8%	\$ 14,483,182	\$ 3,934,751	27.2%	0.0%	-1.5%
March	\$ 13,996,633	\$ 4,098,830	29.3%	\$ 15,621,161	\$ 4,494,061	28.8%	-10.4%	-8.8%
April	\$ 11,022,915	\$ 3,383,784	30.7%	\$ 10,948,078	\$ 3,248,690	29.7%	0.7%	4.2%
May	\$ 10,541,234	\$ 3,045,481	28.9%	\$ 12,036,534	\$ 3,681,149	30.6%	-12.4%	-17.3%
June	\$ 8,466,780	\$ 2,654,861	31.4%	\$ 9,093,268	\$ 2,775,875	30.5%	-6.9%	-4.4%
July	\$ 9,512,702	\$ 2,374,205	25.0%	\$ 10,654,158	\$ 3,214,142	30.2%	-10.7%	-26.1%
August	\$ 8,347,481	\$ 2,364,636	28.3%	\$ 9,477,874	\$ 3,121,078	32.9%	-11.9%	-24.2%
September	\$ 5,337,312	\$ 1,454,980	27.3%	\$ 6,710,981	\$ 1,964,968	29.3%	-20.5%	-26.0%
October	\$ 8,279,900	\$ 2,312,002	27.9%	\$ 9,820,341	\$ 2,732,923	27.8%	-15.7%	-15.4%
November	\$ 11,602,752	\$ 3,007,306	25.9%	\$ 12,501,868	\$ 3,690,791	29.5%	-7.2%	-18.5%
December	\$ 10,879,719	\$ 2,501,109	23.0%	\$ 11,209,981	\$ 2,922,619	26.1%	-2.9%	-14.4%
TOTAL	\$ 128,878,343	\$ 35,794,310	27.8%	\$ 138,408,985	\$ 40,641,644	29.4%	-6.9%	-11.9%

***Casino Drop** is the amount of money that the casino collected from the drop boxes located at each of the gaming tables. **Casino Win** is the amount of money that the Casino has left after expenses (e.g., expenses includes winnings of the patrons) of the table. **Casino Write** is the money that patrons put up to bet on sporting activities. The win when associated with the **Casino Write** refers to the amount of money retained by the casino after the sports games as well as the betting have concluded. A (\$1000.00) for example, means that the casino loss money.

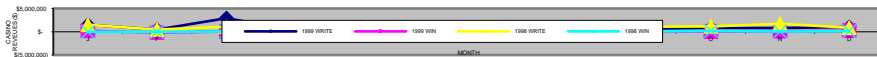
CASINO REVENUES:NASSAU/P.I.:1999

	1999			1998		
	WRITE	WIN	%WIN	WRITE	WIN	%WIN
January	\$ 1,522,650	\$ 178,466	11.7%	\$ 1,530,030	\$ (22,246)	-1.5%
February	\$ 448,205	\$ (168,514)	-37.6%	\$ 504,341	\$ (27,229)	-5.4%
March	\$ 2,927,689	\$ 62,815	2.1%	\$ 1,064,752	\$ 55,079	5.2%
April	\$ 350,593	\$ 61,419	17.5%	\$ 368,393	\$ (4,578)	-1.2%
May	\$ 443,163	\$ 28,007	6.3%	\$ 416,551	\$ 11,150	2.7%
June	\$ 344,505	\$ 3,308	1.0%	\$ 325,006	\$ 29,332	9.0%
July	\$ 165,558	\$ 11,394	6.9%	\$ 249,956	\$ 19,143	7.7%
August	\$ 191,681	\$ 15,285	8.0%	\$ 337,186	\$ (5,675)	-1.7%
September	\$ 644,230	\$ 84,104	13.1%	\$ 1,090,841	\$ 85,234	7.8%
October	\$ 792,363	\$ 65,453	8.3%	\$ 1,145,805	\$ 167,023	14.6%
November	\$ 791,642	\$ 108,386	13.7%	\$ 1,725,780	\$ 67,829	3.9%
December	\$ 1,046,058	\$ 236,956	22.7%	\$ 889,690	\$ 148,557	16.7%
TOTAL	\$ 9,668,337	\$ 687,079	7.1%	\$ 9,648,331	\$ 523,619	5.4%

***Casino Drop** is the amount of money that the casino collected from the drop boxes located at each of the gaming tables. **Casino Win** is the amount of money that the Casino has left after expenses (e.g., expenses includes winnings of the patrons) of the table. **Casino Write** is the money that patrons put up to bet on sporting activities. The win when associated with the **Casino Write** refers to the amount of money retained by the casino after the sports games as well as the betting have concluded. A (\$1000.00) for example, means that the casino loss money.

	1999		1998	
	WRITE	WIN	WRITE	WIN
J	\$ 1,522,650	\$ 178,466	\$ 1,530,030	\$ (22,246)
F	\$ 448,205	\$ (168,514)	\$ 504,341	\$ (27,229)
M	\$ 2,927,689	\$ 62,815	\$ 1,064,752	\$ 55,079
A	\$ 350,593	\$ 61,419	\$ 368,393	\$ (4,578)
M	\$ 443,163	\$ 28,007	\$ 416,551	\$ 11,150
J	\$ 344,505	\$ 3,308	\$ 325,006	\$ 29,332
J	\$ 165,558	\$ 11,394	\$ 249,956	\$ 19,143
A	\$ 191,681	\$ 15,285	\$ 337,186	\$ (5,675)
S	\$ 644,230	\$ 84,104	\$ 1,090,841	\$ 85,234
O	\$ 792,363	\$ 65,453	\$ 1,145,805	\$ 167,023
N	\$ 791,642	\$ 108,386	\$ 1,725,780	\$ 67,829
D	\$ 1,046,058	\$ 236,956	\$ 889,690	\$ 148,557
TOTAL	\$ 9,668,337	\$ 687,079	\$ 9,648,331	\$ 523,619

CASINO REVENUES:NASSAU/P.I.:1999



CASINO REVENUES:GRAND BAHAMA:1999

	1999			1998		
	WRITE	WIN	%WIN	WRITE	WIN	%WIN
January	\$ 890,216	\$ 82,920	9.3%	\$ 557,098	\$ 44,276	7.9%
February	\$ 499,894	\$ (33,015)	-6.6%	\$ 387,595	\$ (28,206)	-7.3%
March	\$ 855,215	\$ 41,344	4.8%	\$ 423,424	\$ 16,472	3.9%
April	\$ 299,260	\$ 813	0.3%	\$ 190,010	\$ (226)	-0.1%
May	\$ 370,964	\$ 21,022	5.7%	\$ 212,721	\$ (10,473)	-4.9%
June	\$ 437,469	\$ 27,867	6.4%	\$ 152,707	\$ (3,419)	-2.2%
July	\$ 450,108	\$ 19,546	4.3%	\$ 158,962	\$ (14,341)	-9.0%
August	\$ 612,868	\$ (6,460)	-1.1%	\$ 231,722	\$ (11,578)	-5.0%
September	\$ 297,244	\$ 81,477	27.4%	\$ 390,273	\$ 74,980	19.2%
October	\$ 480,389	\$ 84,679	17.6%	\$ 436,784	\$ 67,254	15.4%
November	\$ 654,325	\$ 14,569	2.2%	\$ 687,167	\$ 66,264	9.6%
December	\$ 622,743	\$ 99,435	16.0%	\$ 903,188	\$ 161,807	17.9%
TOTAL	\$ 6,470,694	\$ 434,196	6.7%	\$ 4,731,651	\$ 362,810	7.7%

***Casino Drop** is the amount of money that the casino collected from the drop boxes located at each of the gaming tables. **Casino Win** is the amount of money that the Casino has left after expenses (e.g., expenses includes winnings of the patrons) of the table. **Casino Write** is the money that patrons put up to bet on sporting activities. The win when associated with the **Casino Write** refers to the amount of money retained by the casino after the sports games as well as the betting have concluded. A (\$1000.00) for example, means that the casino loss money.

	1999		1998	
	WRITE	WIN	WRITE	WIN
J	\$ 890,216	\$ 82,920	\$ 557,098	\$ 44,276
F	\$ 499,894	\$ (33,015)	\$ 387,595	\$ (28,206)
M	\$ 855,215	\$ 41,344	\$ 423,424	\$ 16,472
A	\$ 299,260	\$ 813	\$ 190,010	\$ (226)
M	\$ 370,964	\$ 21,022	\$ 212,721	\$ (10,473)
J	\$ 437,469	\$ 27,867	\$ 152,707	\$ (3,419)
J	\$ 450,108	\$ 19,546	\$ 158,962	\$ (14,341)
A	\$ 612,868	\$ (6,460)	\$ 231,722	\$ (11,578)
S	\$ 297,244	\$ 81,477	\$ 390,273	\$ 74,980
O	\$ 480,389	\$ 84,679	\$ 436,784	\$ 67,254
N	\$ 654,325	\$ 14,569	\$ 687,167	\$ 66,264
D	\$ 622,743	\$ 99,435	\$ 903,188	\$ 161,807
TOTAL	\$ 6,470,695	\$ 434,197	\$ 4,731,651	\$ 362,810

