

CASINO REVENUES (MLN)
NASSAU/PARADISE ISLAND
1998

Nassau/P.I.	1998	1997	% Change
Drop	\$ 609.8	\$ 599.6	1.7%
Win	\$ 130.5	\$ 132.8	-1.7%
Win/Drop Percentage	21.4%	22.1%	-0.7%

CASINO REVENUES (MLN)
GRAND BAHAMA ISLAND
1998

Grand Bahama	1998	1997	% Change
Drop	\$ 138.4	\$ 168.5	-17.9%
Win	\$ 40.6	\$ 47.6	-14.7%
Win/Drop Percentage	29.3%	28.2%	1.1%

CASINO REVENUES:NASSAU/P.I.:1998

		1998			1997			DROP	WIN			
		DROP	WIN	%WIN	DROP	WIN	%WIN	%Chg. 98/97	%Chg. 98/97			
January	\$	67,029,292	\$	14,035,573	20.9%	\$	71,203,814	\$	15,291,094	21.5%	-5.9%	-8.2%
February	\$	55,057,165	\$	10,877,033	19.8%	\$	58,025,809	\$	12,008,075	20.7%	-5.1%	-9.4%
March	\$	60,213,643	\$	15,570,720	25.9%	\$	63,611,502	\$	13,301,015	20.9%	-5.3%	17.1%
April	\$	52,312,754	\$	12,499,880	23.9%	\$	48,908,694	\$	10,429,566	21.3%	7.0%	19.9%
May	\$	44,036,631	\$	9,590,598	21.8%	\$	46,994,476	\$	11,596,094	24.7%	-6.3%	-17.3%
June	\$	33,541,289	\$	8,391,941	25.0%	\$	38,318,359	\$	9,946,419	26.0%	-12.5%	-15.6%
July	\$	52,905,102	\$	10,023,129	18.9%	\$	41,544,642	\$	9,816,629	23.6%	27.3%	2.1%
August	\$	37,438,597	\$	8,559,707	22.9%	\$	47,454,827	\$	10,733,053	22.6%	-21.1%	-20.2%
September	\$	26,525,520	\$	5,397,066	20.3%	\$	28,806,621	\$	6,108,325	21.2%	-7.9%	-11.6%
October	\$	35,264,570	\$	9,455,582	26.8%	\$	38,324,017	\$	8,113,071	21.2%	-8.0%	16.5%
November	\$	43,507,150	\$	9,670,170	22.2%	\$	55,724,445	\$	13,301,434	23.9%	-21.9%	-27.3%
December	\$	101,992,863	\$	16,413,567	16.1%	\$	60,709,612	\$	12,137,006	20.0%	68.0%	35.2%
TOTAL	\$	609,824,576	\$	130,484,965	21.4%	\$	599,626,818	\$	132,781,781	22.1%	1.7%	-1.7%

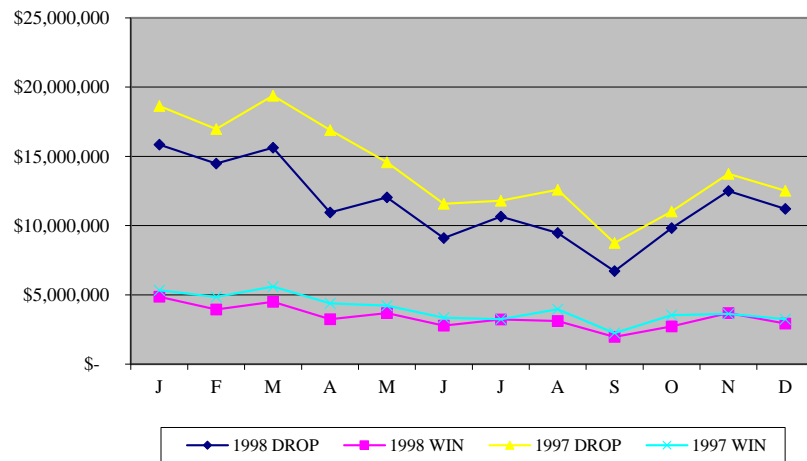
***Casino Drop** is the amount of money that the casino collected from the drop boxes located at each of the gaming tables. **Casino Win** is the amount of money

that the Casino has left after expenses (e.g., expenses includes winnings of the patrons) of the table. **Casino Write** is the money that patrons put up to bet on sporting

activities. The win when associated with the **Casino Write** refers to the amount of money retained by the casino after the sports games as well as the betting have concluded.

A (\$1000.00) for example, means that the casino loss money.

	1998		1997	
	DROP	WIN	DROP	WIN
J	\$ 15,851,559	\$ 4,860,597	\$ 18,637,258	\$ 5,324,107
F	\$ 14,483,182	\$ 3,934,751	\$ 16,976,128	\$ 4,855,779
M	\$ 15,621,161	\$ 4,494,061	\$ 19,386,730	\$ 5,598,472
A	\$ 10,948,078	\$ 3,248,690	\$ 16,896,019	\$ 4,379,057
M	\$ 12,036,534	\$ 3,681,149	\$ 14,575,634	\$ 4,213,849
J	\$ 9,093,268	\$ 2,775,875	\$ 11,572,697	\$ 3,347,363
J	\$ 10,654,158	\$ 3,214,142	\$ 11,801,589	\$ 3,238,996
A	\$ 9,477,874	\$ 3,121,078	\$ 12,602,272	\$ 3,957,819
S	\$ 6,710,981	\$ 1,964,968	\$ 8,745,228	\$ 2,238,996
O	\$ 9,820,341	\$ 2,732,923	\$ 11,018,346	\$ 3,528,729
N	\$ 12,501,868	\$ 3,690,791	\$ 13,737,984	\$ 3,628,901
D	\$ 11,209,981	\$ 2,922,619	\$ 12,518,468	\$ 3,238,214
TOTAL	\$ 138,408,985	\$ 40,641,644	\$ 168,468,353	\$ 47,550,282



CASINO REVENUES:GRAND BAHAMA:1998

	1998			1997			DROP	WIN
	DROP	WIN	%WIN	DROP	WIN	%WIN	%Chg. 98/97	%Chg. 98/97
January	\$ 15,851,559	\$ 4,860,597	30.7%	\$ 18,637,258	\$ 5,324,107	28.6%	-14.9%	-8.7%
February	\$ 14,483,182	\$ 3,934,751	27.2%	\$ 16,976,128	\$ 4,855,779	28.6%	-14.7%	-19.0%
March	\$ 15,621,161	\$ 4,494,061	28.8%	\$ 19,386,730	\$ 5,598,472	28.9%	-19.4%	-19.7%
April	\$ 10,948,078	\$ 3,248,690	29.7%	\$ 16,896,019	\$ 4,379,057	25.9%	-35.2%	-25.8%
May	\$ 12,036,534	\$ 3,681,149	30.6%	\$ 14,575,634	\$ 4,213,849	28.9%	-17.4%	-12.6%
June	\$ 9,093,268	\$ 2,775,875	30.5%	\$ 11,572,697	\$ 3,347,363	28.9%	-21.4%	-17.1%
July	\$ 10,654,158	\$ 3,214,142	30.2%	\$ 11,801,589	\$ 3,238,996	27.4%	-9.7%	-0.8%
August	\$ 9,477,874	\$ 3,121,078	32.9%	\$ 12,602,272	\$ 3,957,819	31.4%	-24.8%	-21.1%
September	\$ 6,710,981	\$ 1,964,968	29.3%	\$ 8,745,228	\$ 2,238,996	25.6%	-23.3%	-12.2%
October	\$ 9,820,341	\$ 2,732,923	27.8%	\$ 11,018,346	\$ 3,528,729	32.0%	-10.9%	-22.6%
November	\$ 12,501,868	\$ 3,690,791	29.5%	\$ 13,737,984	\$ 3,628,901	26.4%	-9.0%	1.7%
December	\$ 11,209,981	\$ 2,922,619	26.1%	\$ 12,518,468	\$ 3,238,214	25.9%	-10.5%	-9.7%
TOTAL	\$ 138,408,985	\$ 40,641,644	29.4%	\$ 168,468,353	\$ 47,550,282	28.2%	-17.8%	-14.5%

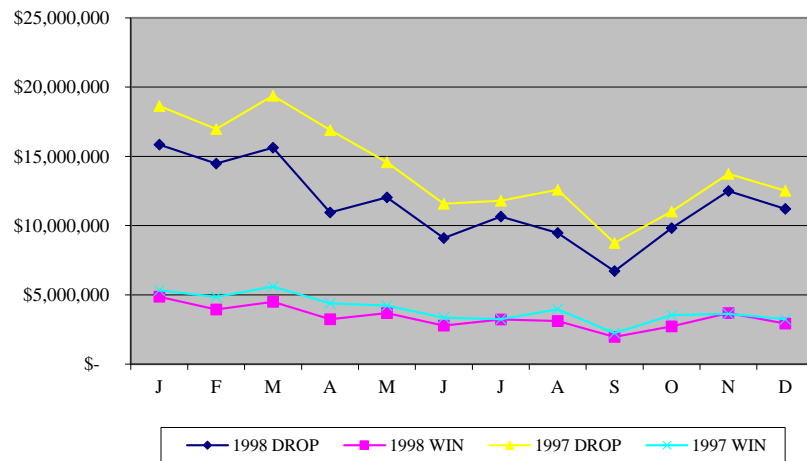
***Casino Drop** is the amount of money that the casino collected from the drop boxes located at each of the gaming tables. **Casino Win** is the amount of money that the Casino has left after expenses (e.g., expenses includes winnings of the patrons) of the table. **Casino Write** is the money that patrons put up to bet on sporting activities. The win when associated with the **Casino Write** refers to the amount of money retained by the casino after the sports games as well as the betting have concluded. A (\$1000.00) for example, means that the casino loss money.

CASINO REVENUES:GRAND BAHAMA:1999

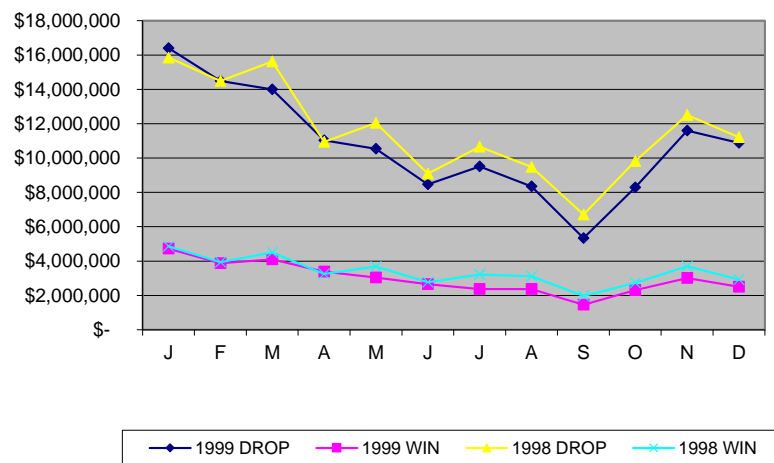
	1999			1998			DROP	WIN
	DROP	WIN	%WIN	DROP	WIN	%WIN	%Chg. 99/98	%Chg. 99/98
January	\$ 16,402,606	\$ 4,720,750	28.8%	\$ 15,851,559	\$ 4,860,597	30.7%	3.5%	-2.9%
February	\$ 14,488,309	\$ 3,876,366	26.8%	\$ 14,483,182	\$ 3,934,751	27.2%	0.0%	-1.5%
March	\$ 13,996,633	\$ 4,098,830	29.3%	\$ 15,621,161	\$ 4,494,061	28.8%	-10.4%	-8.8%
April	\$ 11,022,915	\$ 3,383,784	30.7%	\$ 10,948,078	\$ 3,248,690	29.7%	0.7%	4.2%
May	\$ 10,541,234	\$ 3,045,481	28.9%	\$ 12,036,534	\$ 3,681,149	30.6%	-12.4%	-17.3%
June	\$ 8,466,780	\$ 2,654,861	31.4%	\$ 9,093,268	\$ 2,775,875	30.5%	-6.9%	-4.4%
July	\$ 9,512,702	\$ 2,374,205	25.0%	\$ 10,654,158	\$ 3,214,142	30.2%	-10.7%	-26.1%
August	\$ 8,347,481	\$ 2,364,636	28.3%	\$ 9,477,874	\$ 3,121,078	32.9%	-11.9%	-24.2%
September	\$ 5,337,312	\$ 1,454,980	27.3%	\$ 6,710,981	\$ 1,964,968	29.3%	-20.5%	-26.0%
October	\$ 8,279,900	\$ 2,312,002	27.9%	\$ 9,820,341	\$ 2,732,923	27.8%	-15.7%	-15.4%
November	\$ 11,602,752	\$ 3,007,306	25.9%	\$ 12,501,868	\$ 3,690,791	29.5%	-7.2%	-18.5%
December	\$ 10,879,719	\$ 2,501,109	23.0%	\$ 11,209,981	\$ 2,922,619	26.1%	-2.9%	-14.4%
TOTAL	\$ 128,878,343	\$ 35,794,310	27.8%	\$ 138,408,985	\$ 40,641,644	29.4%	-6.9%	-11.9%

***Casino Drop** is the amount of money that the casino collected from the drop boxes located at each of the gaming tables. **Casino Win** is the amount of money that the Casino has left after expenses (e.g., expenses includes winnings of the patrons) of the table. **Casino Write** is the money that patrons put up to bet on sporting activities. The win when associated with the **Casino Write** refers to the amount of money retained by the casino after the sports games as well as the betting have concluded. A (\$1000.00) for example, means that the casino loss money.

	1998		1997	
	DROP	WIN	DROP	WIN
J	\$ 15,851,559	\$ 4,860,597	\$ 18,637,258	\$ 5,324,107
F	\$ 14,483,182	\$ 3,934,751	\$ 16,976,128	\$ 4,855,779
M	\$ 15,621,161	\$ 4,494,061	\$ 19,386,730	\$ 5,598,472
A	\$ 10,948,078	\$ 3,248,690	\$ 16,896,019	\$ 4,379,057
M	\$ 12,036,534	\$ 3,681,149	\$ 14,575,634	\$ 4,213,849
J	\$ 9,093,268	\$ 2,775,875	\$ 11,572,697	\$ 3,347,363
J	\$ 10,654,158	\$ 3,214,142	\$ 11,801,589	\$ 3,238,996
A	\$ 9,477,874	\$ 3,121,078	\$ 12,602,272	\$ 3,957,819
S	\$ 6,710,981	\$ 1,964,968	\$ 8,745,228	\$ 2,238,996
O	\$ 9,820,341	\$ 2,732,923	\$ 11,018,346	\$ 3,528,729
N	\$ 12,501,868	\$ 3,690,791	\$ 13,737,984	\$ 3,628,901
D	\$ 11,209,981	\$ 2,922,619	\$ 12,518,468	\$ 3,238,214
TOTAL	\$ 138,408,985	\$ 40,641,644	\$ 168,468,353	\$ 47,550,282



	1999		1998	
	DROP	WIN	DROP	WIN
J	\$ 16,402,606	\$ 4,720,750	\$ 15,851,559	\$ 4,860,597
F	\$ 14,488,309	\$ 3,876,366	\$ 14,483,182	\$ 3,934,751
M	\$ 13,996,633	\$ 4,098,830	\$ 15,621,161	\$ 4,494,061
A	\$ 11,022,915	\$ 3,383,784	\$ 10,948,078	\$ 3,248,690
M	\$ 10,541,234	\$ 3,045,481	\$ 12,036,534	\$ 3,681,149
J	\$ 8,466,780	\$ 2,654,861	\$ 9,093,268	\$ 2,775,875
J	\$ 9,512,702	\$ 2,374,205	\$ 10,654,158	\$ 3,214,142
A	\$ 8,347,481	\$ 2,364,636	\$ 9,477,874	\$ 3,121,078
S	\$ 5,337,312	\$ 1,454,980	\$ 6,710,981	\$ 1,964,968
O	\$ 8,279,900	\$ 2,312,002	\$ 9,820,341	\$ 2,732,923
N	\$ 11,602,752	\$ 3,007,306	\$ 12,501,868	\$ 3,690,791
D	\$ 10,879,719	\$ 2,501,109	\$ 11,209,981	\$ 2,922,619
TOTAL	\$ 128,878,343	\$ 35,794,310	\$ 138,408,985	\$ 40,641,644

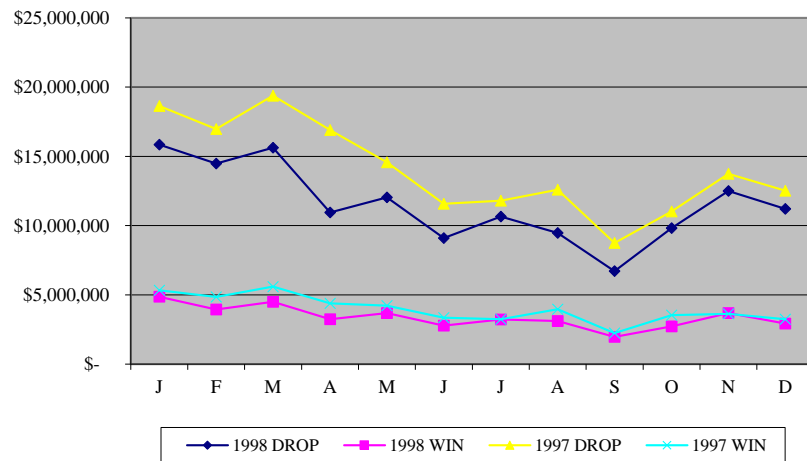


CASINO REVENUES:NASSAU/P.I.:1998

	1998			1997			DROP	WIN
	WRITE	WIN	%WIN	WRITE	WIN	%WIN	%Chg. 98/97	%Chg. 98/97
January	\$ 1,530,030	\$ (22,246)	-1.5%	\$ 1,521,318	\$ (14,225)	-0.9%	0.6%	56.4%
February	\$ 504,341	\$ (27,229)	-5.4%	\$ 533,678	\$ (34,209)	-6.4%	-5.5%	-20.4%
March	\$ 1,064,752	\$ 55,079	5.2%	\$ 954,607	\$ 26,100	2.7%	11.5%	111.0%
April	\$ 368,393	\$ (4,578)	-1.2%	\$ 924,905	\$ 20,781	2.2%	-60.2%	-122.0%
May	\$ 416,551	\$ 11,150	2.7%	\$ 550,060	\$ 65,872	12.0%	-24.3%	-83.1%
June	\$ 325,006	\$ 29,332	9.0%	\$ 499,103	\$ 23,928	4.8%	-34.9%	22.6%
July	\$ 249,956	\$ 19,143	7.7%	\$ 311,033	\$ 14,998	4.8%	-19.6%	27.6%
August	\$ 337,186	\$ (5,675)	-1.7%	\$ 794,245	\$ 100,279	12.6%	-57.5%	-105.7%
September	\$ 1,090,841	\$ 85,234	7.8%	\$ 852,306	\$ 114,769	13.5%	28.0%	-25.7%
October	\$ 1,145,805	\$ 167,023	14.6%	\$ 987,098	\$ 202,573	20.5%	16.1%	-17.5%
November	\$ 1,725,780	\$ 67,829	3.9%	\$ 1,853,740	\$ 69,426	3.7%	-6.9%	-2.3%
December	\$ 889,690	\$ 148,557	16.7%	\$ 1,557,760	\$ 128,247	8.2%	-42.9%	15.8%
TOTAL	\$ 9,648,331	\$ 523,619	5.4%	\$ 11,339,853	\$ 718,539	6.3%	-14.9%	-27.1%

***Casino Drop** is the amount of money that the casino collected from the drop boxes located at each of the gaming tables. **Casino Win** is the amount of money that the Casino has left after expenses (e.g., expenses includes winnings of the patrons) of the table. **Casino Write** is the money that patrons put up to bet on sporting activities. The win when associated with the **Casino Write** refers to the amount of money retained by the casino after the sports games as well as the betting have concluded. A (\$1000.00) for example, means that the casino loss money.

	1998		1997	
	DROP	WIN	DROP	WIN
J	\$ 15,851,559	\$ 4,860,597	\$ 18,637,258	\$ 5,324,107
F	\$ 14,483,182	\$ 3,934,751	\$ 16,976,128	\$ 4,855,779
M	\$ 15,621,161	\$ 4,494,061	\$ 19,386,730	\$ 5,598,472
A	\$ 10,948,078	\$ 3,248,690	\$ 16,896,019	\$ 4,379,057
M	\$ 12,036,534	\$ 3,681,149	\$ 14,575,634	\$ 4,213,849
J	\$ 9,093,268	\$ 2,775,875	\$ 11,572,697	\$ 3,347,363
J	\$ 10,654,158	\$ 3,214,142	\$ 11,801,589	\$ 3,238,996
A	\$ 9,477,874	\$ 3,121,078	\$ 12,602,272	\$ 3,957,819
S	\$ 6,710,981	\$ 1,964,968	\$ 8,745,228	\$ 2,238,996
O	\$ 9,820,341	\$ 2,732,923	\$ 11,018,346	\$ 3,528,729
N	\$ 12,501,868	\$ 3,690,791	\$ 13,737,984	\$ 3,628,901
D	\$ 11,209,981	\$ 2,922,619	\$ 12,518,468	\$ 3,238,214
TOTAL	\$ 138,408,985	\$ 40,641,644	\$ 168,468,353	\$ 47,550,282



CASINO REVENUES:GRAND BAHAMA:1998

	1998			1997			DROP	WIN
	WRITE	WIN	%WIN	WRITE	WIN	%WIN	%Chg. 98/97	%Chg. 98/97
January	\$ 557,098	\$ 44,276	7.9%	\$ 885,053	\$ (23,557)	-2.7%	-37.1%	-288.0%
February	\$ 387,595	\$ (28,206)	-7.3%	\$ 379,979	\$ (81,311)	-21.4%	2.0%	-65.3%
March	\$ 423,424	\$ 16,472	3.9%	\$ 467,720	\$ 17,845	3.8%	-9.5%	-7.7%
April	\$ 190,010	\$ (226)	-0.1%	\$ 401,445	\$ (29,504)	-7.3%	-52.7%	-99.2%
May	\$ 212,721	\$ (10,473)	-4.9%	\$ 331,401	\$ 28,016	8.5%	-35.8%	-137.4%
June	\$ 152,707	\$ (3,419)	-2.2%	\$ 248,932	\$ 21,233	8.5%	-38.7%	-116.1%
July	\$ 158,962	\$ (14,341)	-9.0%	\$ 212,286	\$ (8,493)	-4.0%	-25.1%	68.9%
August	\$ 231,722	\$ (11,578)	-5.0%	\$ 418,617	\$ 41,584	9.9%	-44.6%	-127.8%
September	\$ 390,273	\$ 74,980	19.2%	\$ 663,893	\$ 35,482	5.3%	-41.2%	111.3%
October	\$ 436,784	\$ 67,254	15.4%	\$ 517,371	\$ 174,494	33.7%	-15.6%	-61.5%
November	\$ 687,167	\$ 66,264	9.6%	\$ 677,415	\$ 45,123	6.7%	1.4%	46.9%
December	\$ 903,188	\$ 161,807	17.9%	\$ 584,325	\$ 100,052	17.1%	54.6%	61.7%
TOTAL	\$ 4,731,651	\$ 362,810	7.7%	\$ 5,788,435	\$ 320,966	5.5%	-18.3%	13.0%

***Casino Drop** is the amount of money that the casino collected from the drop boxes located at each of the gaming tables. **Casino Win** is the amount of money that the Casino has left after expenses (e.g., expenses includes winnings of the patrons) of the table. **Casino Write** is the money that patrons put up to bet on sporting activities. The win when associated with the **Casino Write** refers to the amount of money retained by the casino after the sports games as well as the betting have concluded. A (\$1000.00) for example, means that the casino loss money.

	1998		1997	
	DROP	WIN	DROP	WIN
J	\$ 15,851,559	\$ 4,860,597	\$ 18,637,258	\$ 5,324,107
F	\$ 14,483,182	\$ 3,934,751	\$ 16,976,128	\$ 4,855,779
M	\$ 15,621,161	\$ 4,494,061	\$ 19,386,730	\$ 5,598,472
A	\$ 10,948,078	\$ 3,248,690	\$ 16,896,019	\$ 4,379,057
M	\$ 12,036,534	\$ 3,681,149	\$ 14,575,634	\$ 4,213,849
J	\$ 9,093,268	\$ 2,775,875	\$ 11,572,697	\$ 3,347,363
J	\$ 10,654,158	\$ 3,214,142	\$ 11,801,589	\$ 3,238,996
A	\$ 9,477,874	\$ 3,121,078	\$ 12,602,272	\$ 3,957,819
S	\$ 6,710,981	\$ 1,964,968	\$ 8,745,228	\$ 2,238,996
O	\$ 9,820,341	\$ 2,732,923	\$ 11,018,346	\$ 3,528,729
N	\$ 12,501,868	\$ 3,690,791	\$ 13,737,984	\$ 3,628,901
D	\$ 11,209,981	\$ 2,922,619	\$ 12,518,468	\$ 3,238,214
TOTAL	\$ 138,408,985	\$ 40,641,644	\$ 168,468,353	\$ 47,550,282

